



ICS Aero
1813 SW Market St.
Lee's Summit, MO 64062
www.icsaero.com
816-246-4500
sales@aeroexpress.com



NEW!
Now with ARINC-429

DataTap-10 Miniature ASCB-D TIS, SIU, NIC/PROC



Innovative High Tech Solutions and Support for Leading Edge Companies



ICS Aero
1813 SW Market St.
Lee's Summit, MO 64062
www.icsaero.com
816-246-4500
sales@aeroexpress.com



THE ASCB-D SOURCE



ICS has been producing ASCB-D equipment since 1998. That equipment has been used in applications starting with Honeywell Engineering Design of ASCB-D through Flight Simulation, Flight Test, Production, and Maintenance. We also sell products worldwide directly to owners / operators of aircraft. See: www.ASCBD.com for a sample of our products.

Innovative High Tech Solutions and Support for Leading Edge Companies



ICS Aero
1813 SW Market St.
Lee's Summit, MO 64062
www.icsaero.com
816-246-4500
sales@aeroexpress.com



ICS **AERO** has built custom solutions to several different types of ASCB needs for over 15 years. Some of these Include:

- **First Generation PCI-NIC** This was a full length PCI card design by ICS for Honeywell to fit into a PCI slot of an industrial PC platform and to act as a low cost alternative to a MAU NIC module. The PCI-NIC was designed to be nearly identical to a Honeywell MAU-NIC and runs Honeywell DEOS and NIC Flight Software.
- **Test Interface Unit (TIUs)** originally for Honeywell Engineering to test hardware and software development. The TU software was written by Honeywell to run on an ICS supplied Platform with one or two of the Legacy PCI NICs. These were first in service in 1998 and ICS has produced over 600 of these platforms for Honeywell and their customers since that time. Still produced and sold today
- **Simulator Interface Unit (SIU's)** for Interfacing flight simulators to an ASCB-D bus. First placed into service in 2000 at Fairchild / Dornier in Germany. Still produced and sold today.
- **Telemetry Interface System (TIS)** Originally developed for the Hawker Horizon and the Dornier 728 (simultaneous development) in 1999 to serve as an ASCB read only interface to existing Flight Test Acquisition Systems that did not have ASCB-D capability.
- **DataTap Bus Reader** These were originally designed and built by ICS in 2005 for field service use on a laptop and the name was later changed to **FlightLine 1400** and **FlightLine1500** platforms. The 1500 is still in production today.
- **Bus Isolation Unit (BIU)** These were first built in 2007 to allow data collection on a Gulfstream 550 German Atmospheric Research Plane called HALO during flight. The device is an ASCB-D firewall. It is simple in construction and has no software or Hardware that is subject to DO-254. The original Unit is a single channel . Newer smaller dual channel units have been built since.



ICS Aero
1813 SW Market St.
Lee's Summit, MO 64062
www.icsaero.com
816-246-4500
sales@aeroexpress.com



Most of these original solutions were large and heavy Rack Mounted solutions based on one or two First Generation PCI-NICs.

- **First Generation PCI-NIC** Large, power hungry, and expensive to build. 1998 technology, some of it mature even in 1998.
- **Test Interface Unit (TIUs)** Typically 6U Rack Mounted enclosures that were over 60 lbs in weight. Two PCI-NICs were required for transmitting on more than one side of the aircraft. These were produced in lighter 4U rack mount systems and eventually in the light weight portable 40 Lb lunchbox ! They still used first generation PCI-NICs.
- **Simulator Interface Unit (SIU's)** These units were all built in 4U rack mounted enclosures weighing over 35 lbs. They required two first generation PCI-NICs to simulate the pilots and co-pilots ASCB bus.
- **Telemetry Interface System (TIS)** These were built in 4U and 2U chassis but were still heavy and required a lot of power.





ICS Aero
1813 SW Market St.
Lee's Summit, MO 64062
www.icsaero.com
816-246-4500
sales@aeroexpress.com



Starting in 2004 ICS developed a software emulation of the PCI-NIC for read only applications. This resulted in some new smaller and lighter platforms, but these were dedicated purpose and required a lot of processing power rendering the platforms purpose specific.

- **DATATAP Bus Reader Table** Much smaller ASCB bus reading and recording technology technology for non real-time applications
- **FlightLine 1500** Panasonic Toughbook Based ASCB-D bus reader and recorder. Approximately 5 lbs in weight and battery powered. Another major improvement. These are still in maintenance service today but required the purchase of a dedicated laptop platform as the CPU requirements of data processing on the ASCB-D bus were still demanding.
- **Mini-TIS** Rugged PC-104 TIS replacement solution that were approximately 12 lbs in weight and drew about 20 watts. A major improvement. These are still in flight test service today





ICS Aero
1813 SW Market St.
Lee's Summit, MO 64062
www.icsaero.com
816-246-4500
sales@aeroexpress.com



Enough history, Meet State of the Art ASCB !



DataTap-10 Universal Interface



ASCB-D Airborne NIC and PROC in 6x10cm
PWB weighing 70 Grams and using 2W.

Yes it's flying!



μ TIS Flight Test Recorder and Converter
2 lbs, 10 watts, 128 GB (18 Hours) two full bus
Recorder.



PMC Dual PCI-NIC replacement
With built in PDD execution



ICS Aero
1813 SW Market St.
Lee's Summit, MO 64062
www.icsaero.com
816-246-4500
sales@aeroexpress.com



So how is this possible?

It may sound too good to be true,
but it's not. The DataTap-10 really is
Next Generation



- In 2006, ICS started a development project that would reduce the size and power consumption of the ASCB-D communications Interfaces in a dramatic way while preserving and enhancing the performance.
- The project was to take previously written ICS NIC-PDD and PROC-PDD software and implement it entirely in hardware finite state machines in an FPGA. This created an ASCB-D interface with unmatched timing precision.
- This project was extremely successful and is in use in all ICS ASCB-D products developed since that time allowing for small, low power solutions to ASCB-D interfacing needs.



ICS Aero
 1813 SW Market St.
 Lee's Summit, MO 64062
 www.icsaero.com
 816-246-4500
 sales@aeroexpress.com



One DataTap-10, Many Applications and Multiple Functionality Replacement



Innovative High Tech Solutions and Support for Leading Edge Companies



ICS Aero
1813 SW Market St.
Lee's Summit, MO 64062
www.icsaero.com
816-246-4500
sales@aeroexpress.com



One DataTap-10, Many Applications and Multiple Functionality Replacement



DUAL PCI-NIC replacement

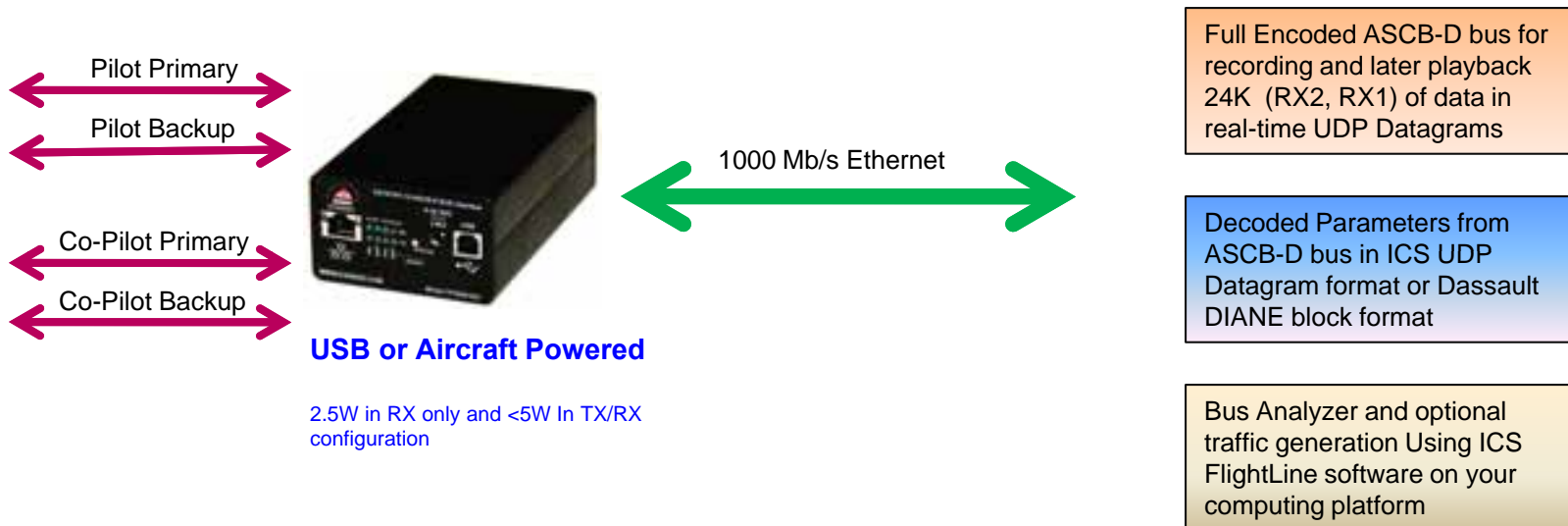
- Replace two 1st Generation PCI-NICs with one DataTap-10 when purchased in optional RX and TX configuration.
- Interface ASCB-D busses to DataTap-10 using same connectors and pin-out as the PCI-NIC
- Connect to TIU/SIU/TIS using 1000/100 Mb/s Ethernet
- Load NIC registry and other files via FTP over the same 1000/100 Mb/s link used for data. No more 10Base2!
- All ICS platforms that previously used PCI-NICs are now available with DataTap-10 as a replacement



ICS Aero
1813 SW Market St.
Lee's Summit, MO 64062
www.icsaero.com
816-246-4500
sales@aeroexpress.com



One DataTap-10, Many Applications and Multiple Functionality Replacement



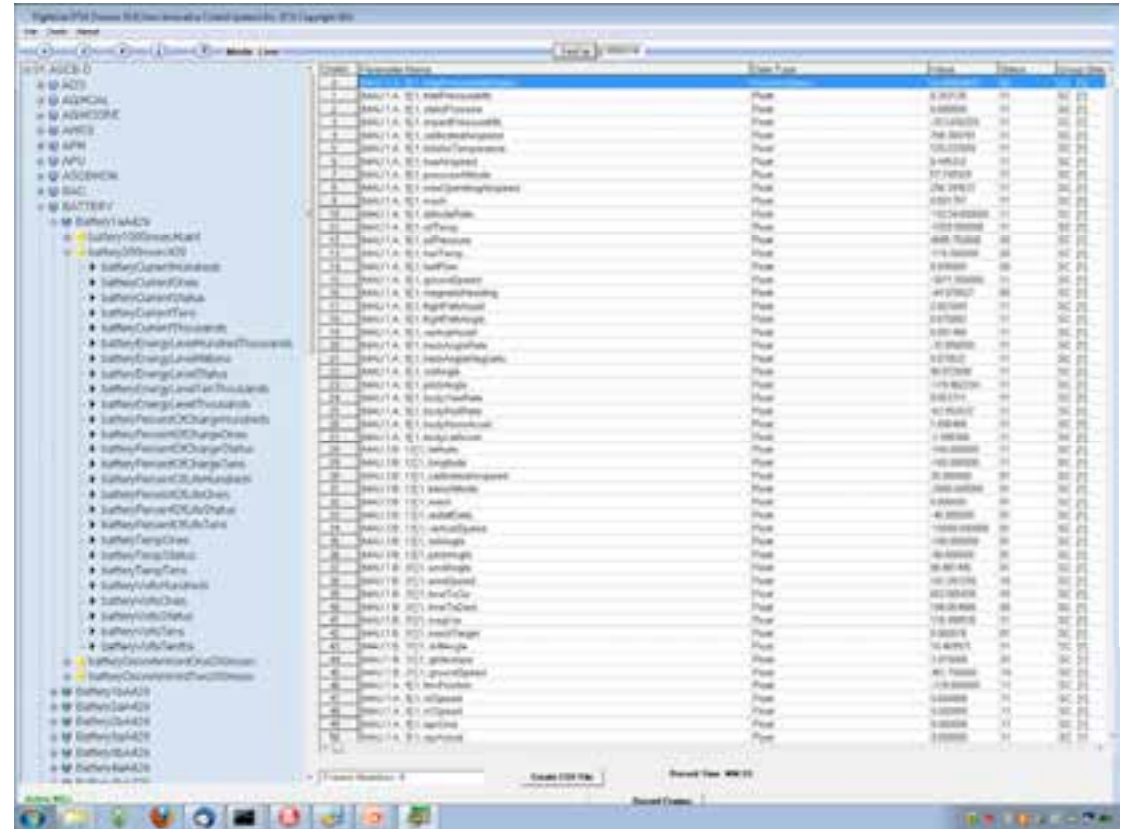
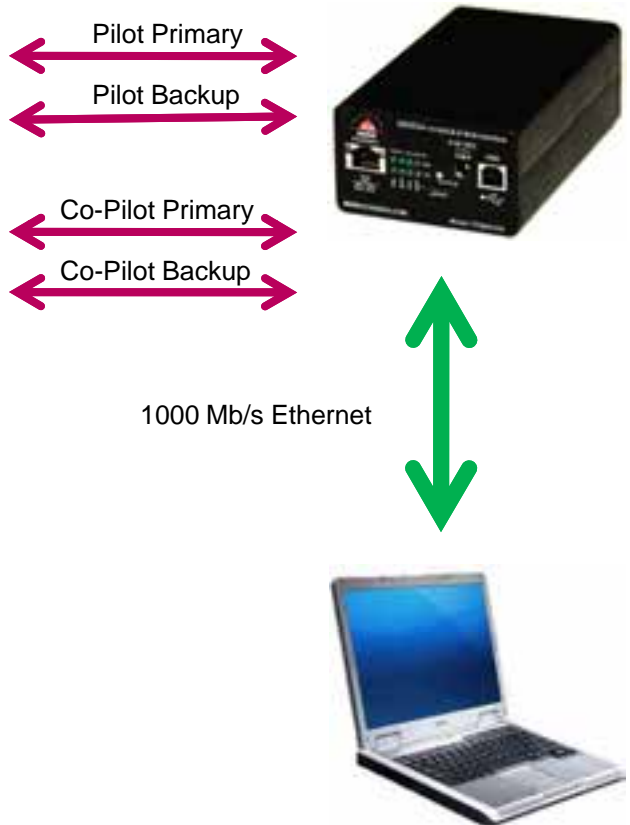
- Directly decode and convert up to 1000 parameters to Engineering Units from one DataTap-10.
- DataTap-10 is scalable, Use 2, 3, or more for larger numbers of parameters.
- Use ICS Windows Based FlightLine software (included) to use a DataTap-10 on your platform (Laptop, or Desktop) Entire contents of two ASCB-D busses can be recorded on your platform with a single FlightLine-10 adapter. The recording format can be played back by the Honeywell TIU software playback function.



ICS Aero
 1813 SW Market St.
 Lee's Summit, MO 64062
 www.icsaero.com
 816-246-4500
 sales@aeroexpress.com



DataTap-10, with FlightLine Software Bus Analysis, Recording, and optional Traffic Generation.

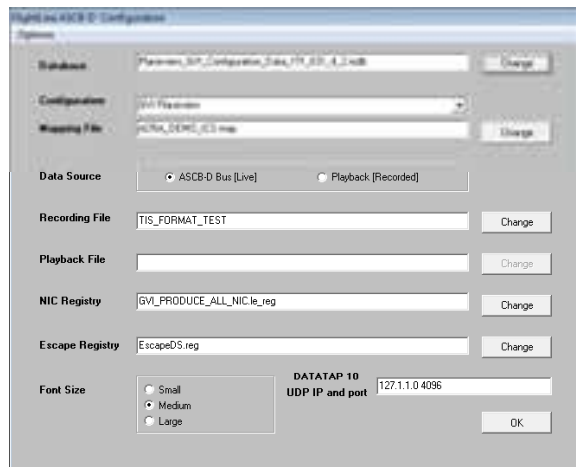
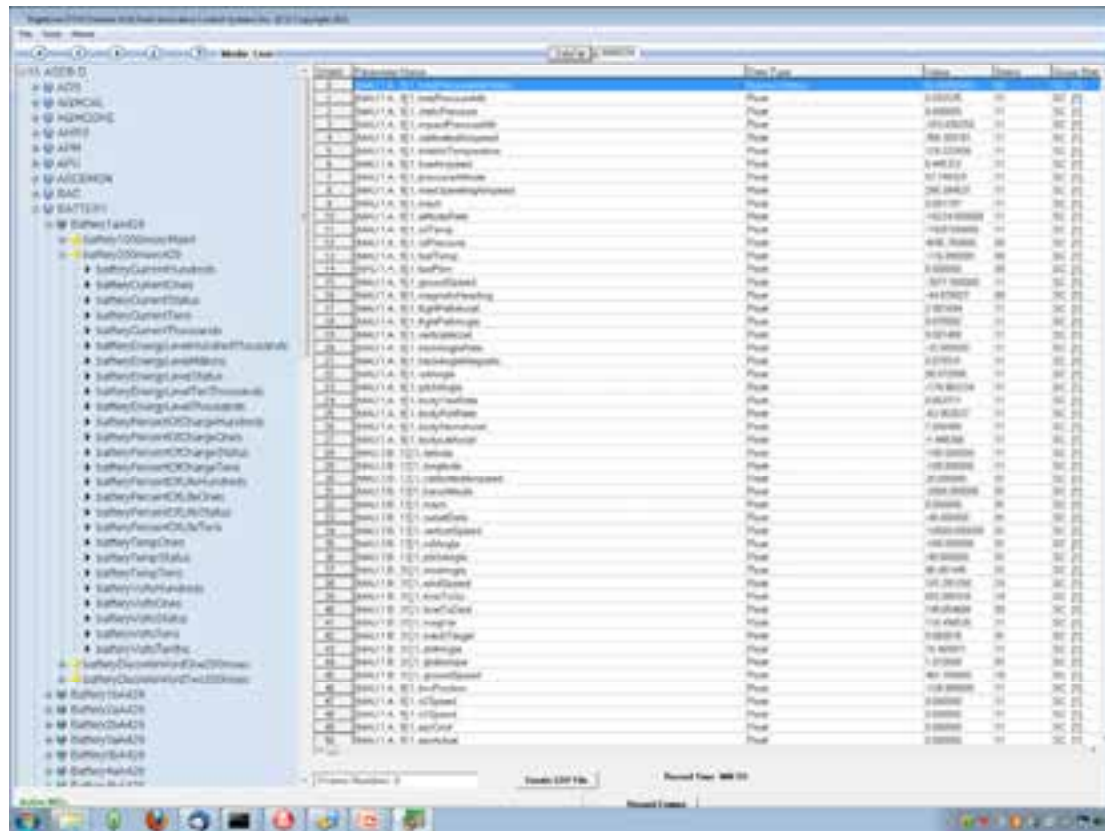




ICS Aero
 1813 SW Market St.
 Lee's Summit, MO 64062
 www.icsaero.com
 816-246-4500
 sales@aeroexpress.com



DataTap-10, with FlightLine Software Bus Analysis, Recording, and optional Traffic Generation.



Record, Playback, CSV Generation, DataTap-10 Configuration, ESCAPE Database parameter selection, TIS/SIU Configuration file generation, Excel Parameter List management

Innovative High Tech Solutions and Support for Leading Edge Companies



ICS Aero
1813 SW Market St.
Lee's Summit, MO 64062
www.icsaero.com
816-246-4500
sales@aeroexpress.com



FlightLine Software Overview

- Directly Load Honeywell® ESCAPE Database files in old MS Access 97 format as well as newer MS Access formats.
- Place all parameters in Tree View for selection on Data Display
- Provides control and file loading for DataTap-10 adapters when the adapter is present but does not require an adapter to playback data or to create maps.
- FlightLine software is now also used to produce TIS.CFG files for other ICS products such as TIS, Mini-TIS and μ TIS, and SIU replacing the older TIS configuration software.
- Can be used for post data analysis and playback without DataTap-10
- Plays back ICS TIS and SIU format recordings to screen and optionally a CSV file.
- Provides Shared Memory Object interface of decoded data to other applications running on the same platform such as Microsoft Flight Simulator or X-plane.
- Contains new Load XLS Map command that allows automated creation of parameter sets from Microsoft access that can be loaded directly from Excel spreadsheets instead of having to select each parameter individually from the tree view list.



ICS Aero
1813 SW Market St.
Lee's Summit, MO 64062
www.icsaero.com
816-246-4500
sales@aeroexpress.com



DataTap-10 Optional I/O

When Equipped with the Optional DB-50 I/O connector and onboard hardware the DataTap-10 can be used for more than just ASCB traffic analysis and generation. The following interfaces below are supported (simultaneously with ASCB)

This functionality is an option to the Base DataTap-10 and is broken into Analog/Discrete/RS-232 and ARINC-429 options. The ARINC-429 option includes the Analog/Discrete/RS-232 I/O but the Datatap-10 is available without the ARINC-429 due to the cost of the Interface ICs

- Four 3.3v – 60V input discrettes
- Four 9-60V output discrettes that can source or sink up to 2 amps each.
- Three +/- 10V Analog Inputs 16-24 bits with internal precision reference.
- IRIG B Timing Input (can be used as forth Analog input)
- Two RS-232 ports
- Four High/low speed ARINC-429 inputs
- Two High / Low speed ARINC-429 Outputs
- 9-36VDC power can also be supplied to the DT10 through the DB-50





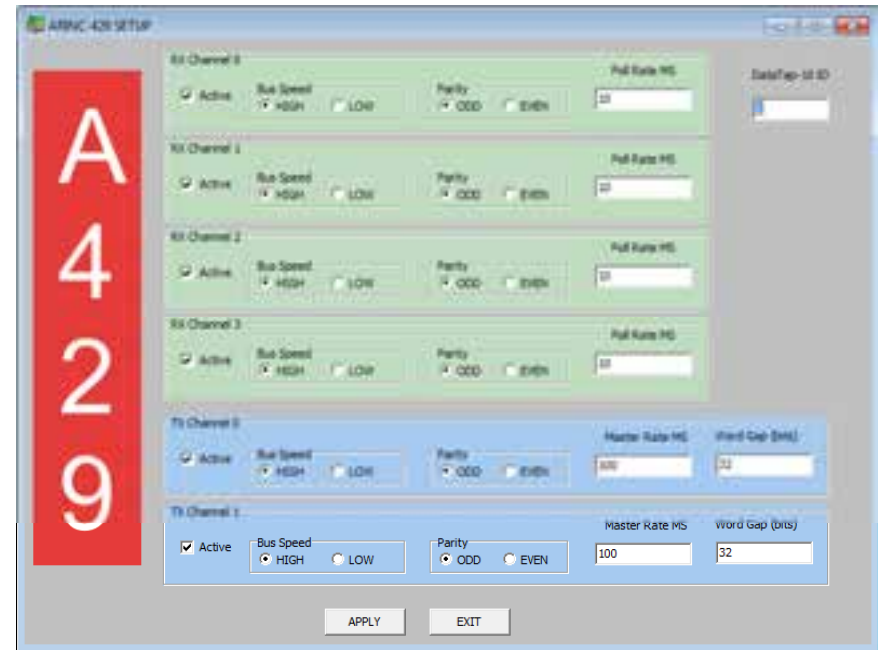
ICS Aero
 1813 SW Market St.
 Lee's Summit, MO 64062
 www.icsaero.com
 816-246-4500
 sales@aeroexpress.com



DataTap-10 ARINC-429 Optional I/O

When Equipped with the Optional DB-50 I/O connector and onboard hardware the DataTap-10 can be used for ARINC-429 I/O as well as ASCB traffic analysis and generation. This functionality is supported (simultaneously with ASCB) traffic analysis and generation.

- Four High/low speed ARINC-429 inputs per DataTap-10
- Two High / Low speed ARINC-429 Outputs per DataTap-10
- FlightLine Software supports multiple DataTap-10s connected for increased ARINC-429 channel counts.
- Decoding in Engineering Units by Selectable Equipment ID expected to be implemented by end of September 2011.
- Parameters added to same display as ASCB-D data.
- All Data on display screen (ARINC-429 and ASCB-D) can be exported to Comma Separated Values (CSV) file.





ICS Aero
1813 SW Market St.
Lee's Summit, MO 64062
www.icsaero.com
816-246-4500
sales@aeroexpress.com



DataTap-10 ARINC-717 FDR Optional I/O

Coming Soon 4th QTR 2011



ICS Aero
1813 SW Market St.
Lee's Summit, MO 64062
www.icsaero.com
816-246-4500
sales@aeroexpress.com



DataTap-10

The lowest cost, most capable ASCB-D interface yet.

First production units became available June 12th,



ICS Aero
1813 SW Market St.
Lee's Summit, MO 64062
www.icsaero.com
816-246-4500
sales@aeroexpress.com

Innovative High Tech Solutions and Support for Leading Edge Companies

Contact Information

To request quotations, general information, or to place orders, please contact us at:



1813 SW Market St. Lee's
Summit , MO 64062
816-246-4500
sales@aeroexpress.com w
[ww.icsaero.com](http://www.icsaero.com)



1813 SW Market St. Lee's Summit, MO 64062 816-246-4500 www.icsaero.com